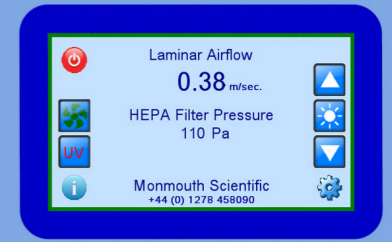


**Monmouth+
Scientific**

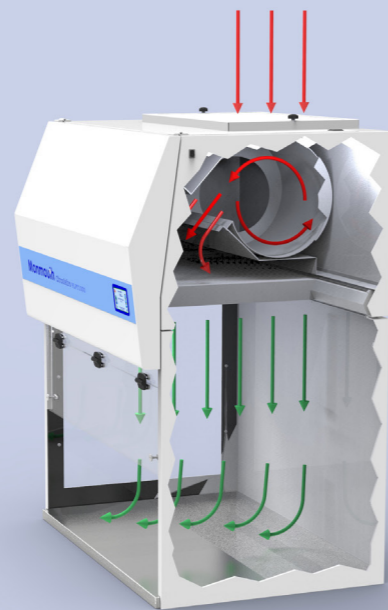
www.monmouthscientific.co.uk



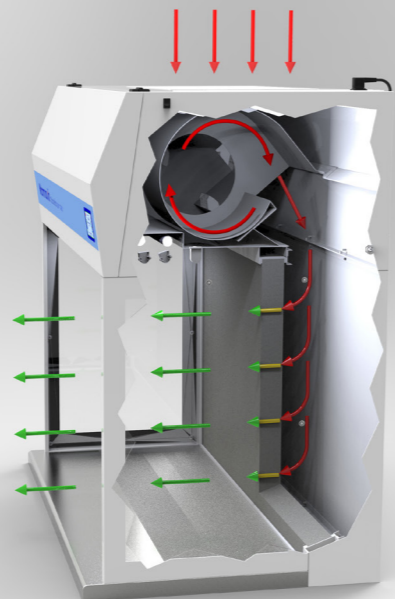
Monmouth+ Circulaire VLFT1000



Vertical Airflow



Horizontal Airflow



Circulaire® Laminar Flow Cabinets

The new Monmouth Scientific Circulaire® range of Vertical and Horizontal Laminar Flow Cabinets offer features and benefits that are second to none.

As standard, the cabinets conform fully to BS EN 14644 and offer clean air to ISO Class 4 (Class 10) as described in the standard. To ensure compliance, the cabinets use British Manufactured H15 ULPA particulate filters for the very best in product protection.

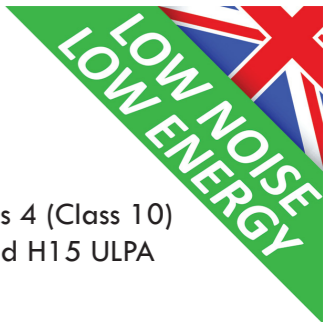
The Circulaire VLF-T and HLF-T range of cabinets are fitted with the latest digital fans to ensure low noise operation and low energy consumption. Energy efficiency is improved further with the use of internal LED lighting and PIR movement sensors to shut off all non-essential electronic items when the cabinet senses a period of inactivity.

The new ranges are fitted with the new Visionaire® 4.3" (11 cm) full colour touch screen control system that allows control and monitoring never before seen in a cabinet of this type. This control system offers some of the following functions in its design:

- Automatic ECO mode, switches off lighting and electronic display after a period of operator inactivity*
- Airflow Monitoring with actual airflow readings in m/sec or ft/min
- Electronic monitoring of pressure drop across filter face in pascals
- Automatic airflow compensation maintains air speeds at the correct predetermined level
- Audible* and highly visual alarms should levels exceed specified limits
- Lighting brightness adjustment
- Easily identified warning and maintenance messages
- Fan running indicator
- Cabinet hours run time indicator
- Service interval monitoring
- Cabinet information screen with: date of commissioning, date of last & next service, filter fitment dates, cabinet serial number and filter part numbers.
- **Optional UV light with electronically interlocked night door for ultimate operator safety
- **Programmable UV light system including delayed operation and UV times with timer countdown
- **UV light hours run indicator
- PIN number access to Engineer & Supervisor settings

*Can be deactivated if preferred

**Factory Fitted Option



Vertical Laminar Flow Cabinets



VLFT1000 - 1000mm wide
with optional stainless steel work surface



- ISO Class 4 Clean Air
- **Low Noise**
- **Low Energy**
- Visionaire® Colour Touch Screen Control System with full electronic monitoring of all operational parameters
- Automatic Airflow Compensation
- Automatic ECO Mode - switches off all non-essential components when cabinet is left unattended
- Choice of 4 standard sizes
- U15 ULPA filters fitted as standard
- Easily changeable pre-filters
- Hinged front panel to allow access to the work area, but also to ensure linearity of air
- Special sizes or customisation available upon request
- Construction of zintec powder coated mild steel
- Optional Stainless Steel work surface with rolled edge for comfort
- Clear glazed sides for maximum visibility and operator comfort
- Internal LED dimmable lighting
- Side mounted double electrical socket for ancillary equipment operation
- DOP test port
- Optional UV Lighting with removable and interlocked safety screen for sterilisation of the work area



Visionaire® Control System



Double Electrical Socket



DOP Filter Test Port

U15 ULPA
ISO Class 4

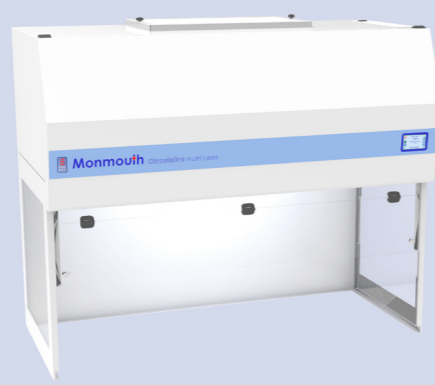
ULPA Filters fitted as standard

Specifications

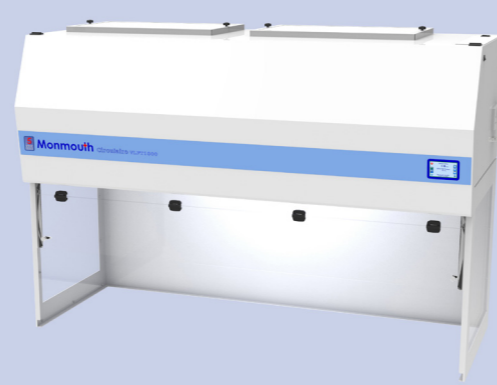
	VLFT1000 1000mm wide	VLFT1200 1200mm wide	VLFT1500 1500mm wide	VLFT1800 1800mm wide
External Dimensions W x D x H - mm	1000 x 745 x 1265	1200 x 745 x 1265	1500 x 745 x 1265	1800 x 745 x 1265
Work Area Dimensions W x D x H - mm	980 x 650 x 725 (Internal height reduced by 25mm when work surface is fitted)	1180 x 650 x 725 (Internal height reduced by 25mm when work surface is fitted)	1480 x 650 x 725 (Internal height reduced by 25mm when work surface is fitted)	1780 x 650 x 725 (Internal height reduced by 25mm when work surface is fitted)
Air Cleanliness	>ISO Class 4 (Class 10)			
Typical airflow speed	>0.4m/s downflow			
	ULPA Filters - 99.9998% efficient at 0.12 microns			
Airflow	850m ³ /hr	1050m ³ /hr	1325m ³ /hr	1600m ³ /hr
Airflow/Filter monitoring	Visionaire® system with digital airflow and filter pressure drop reading, low airflow alarm and high pressure audible and visual alarms			
Typical Noise Level	Circa 51db(A)	Circa 52db(A)	Circa 54db(A)	Circa 54db(A)
Power	65 watts	70 watts	80 watts	90 watts
Compliance to BS EN 14644	YES			
CE Marked	YES			



VLFT1200 - 1200mm wide



VLFT1500 - 1500mm wide



VLFT1800 - 1800mm wide

Horizontal Laminar Flow Cabinets

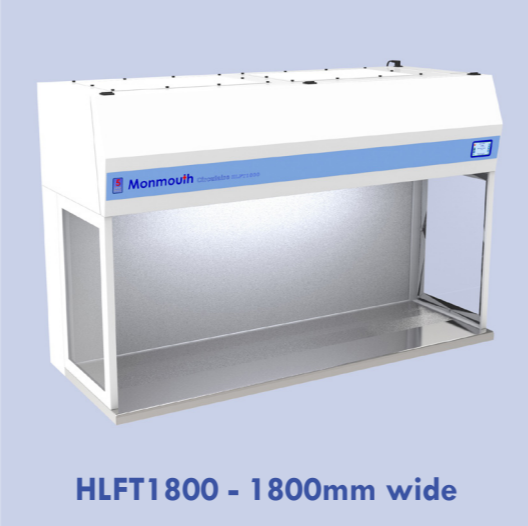


- ISO Class 4 Clean Air
- **Low Noise**
- **Low Energy**
- **Visionaire® Colour Touch Screen Control System** with full electronic monitoring of all operational parameters
- **Automatic Airflow Compensation**
- **Automatic ECO Mode** - switches off all non-essential components when cabinet is left unattended
- **Choice of 4 standard sizes**
- **U15 ULPA filters** fitted as standard
- **Easily changeable pre-filters**
- **Special sizes or customisation available upon request**
- **Construction of zintec powder coated mild steel**
- **Stainless Steel work surface with rolled edge for comfort**
- **Clear glazed sides for maximum visibility and operator comfort**
- **Internal LED dimmable lighting**
- **DOP test port**
- **Optional UV Lighting with removable and interlocked safety screen for sterilisation of the work area**



Specifications

	HLFT900 900mm wide	HLFT1200 1200mm wide	HLFT1500 1500mm wide	HLFT1800 1800mm wide
External Dimensions W x D x H - mm	900 x 725 x 1165	1200 x 725 x 1165	1500 x 725 x 1165	1800 x 725 x 1165
Work Area Dimensions W x D x H - mm	880 x 530 x 720	1180 x 530 x 720	1480 x 530 x 720	1780 x 530 x 720
Air Cleanliness	>ISO Class 4 (Class 10)			
Typical airflow speed	>0.4m/s downflow			
	ULPA Filters - 99.9998% efficient at 0.12 microns			
Airflow	950m ³ /hr	1175m ³ /hr	1325m ³ /hr	1600m ³ /hr
Airflow/Filter monitoring	Visionaire® system with digital airflow and filter pressure drop reading, low airflow alarm and high pressure audible and visual alarms			
Typical Noise Level	Circa 50db(A)	Circa 52db(A)	Circa 54db(A)	Circa 54db(A)
Power	65 watts	70 watts	80 watts	90 watts
Compliance to BS EN 14644				YES
CE Marked				YES



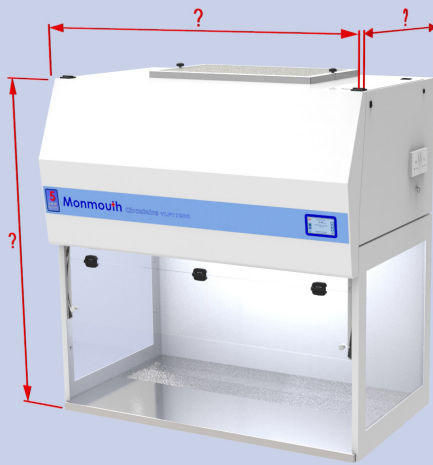
1.



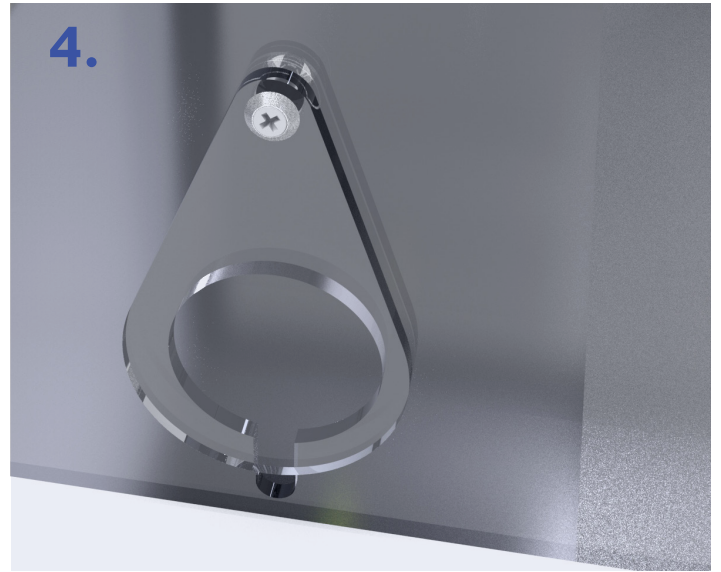
2.



3.



4.



Laminar Flow Cabinet Options:

- | | |
|---|---|
| <ol style="list-style-type: none"> 1. UV light with Interlocked Night Door 3. Custom Sizes Available <ul style="list-style-type: none"> • Gas/Water Supplies • Stainless Steel, Polypropylene or PVC Options • Under Cupboards | <ol style="list-style-type: none"> 2. Base Stand 4. Cable Entry Ports |
|---|---|



Monmouth
Scientific

biomedis Vertriebsgesellschaft mbH
Kerkrader Straße 2
35394 Gießen
Germany
Tel. ++49 641 946 001 0
zentrale@biomedis.de
www.biomedis.de

Units 5 & 6, Kilnside, East Quay, Bridgwater, Somerset, TA6 4DB United Kingdom

Tel: +44(0)1278 458090 Fax: +44(0)1278 458091

Email: info@monmouthscientific.co.uk

Website: www.monmouthscientific.co.uk